

# Rittal – The System.

Faster – better – everywhere.



## PB 8017.686 Pushbutton boxes PB

State: 8/16/2024 (Source: [rittal.com/us-en](http://rittal.com/us-en))

ENCLOSURES

POWER DISTRIBUTION

CLIMATE CONTROL

IT INFRASTRUCTURE

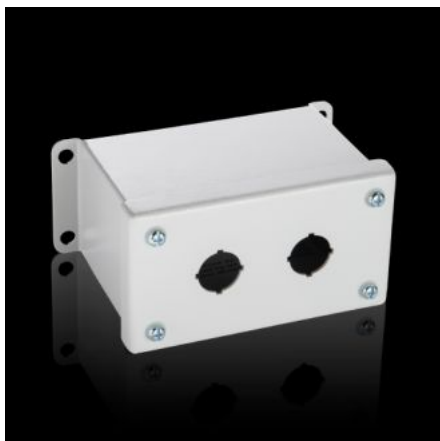
SOFTWARE & SERVICES

FRIEDHELM LOH GROUP



# PB 8017.686 - Pushbutton boxes PB extra deep

The NEMA rated PB series pushbutton box enclosure is designed for indoor use to house pushbuttons, selector switches, and pilot lights. This enclosure protects equipment from dirt, dust, sprayed water, oil, and coolants.



## Features

Model No.	PB 8017.686
Material	Carbon steel
Surface finish	Housing and cover: Dipcoat primed, powder-coated on the outside, textured paint
Color	RAL 7035
Supply includes	Wall mounting bracket Mounting panel: Zinc-plated Cover screws, captive
Hole diameter	30.5 mm
Number of holes	2
Number of columns	1
Number of rows	2

# Features

---

Dimensions	Width: 101 mm Height: 152 mm Depth: 120 mm Width: 3.98 " Height: 5.98 " Depth: 4.72 "
------------	--

---

Protection category NEMA	NEMA 12 NEMA 13 NEMA 4
--------------------------	------------------------------

---

Packaging unit	1 pc(s).
----------------	----------

---

Weight/packaging unit	1.4 kg 3.1 lb.
-----------------------	-------------------

---

Customs tariff number	7326909099
-----------------------	------------

---

UPC-Code	81176
----------	-------